

## SBSH ContactBreeze User Manual

Updated to version 2.0.05  
On date: 5/12/2006  
By: Stefan Winkel



Downloads and additional support can be found at our site

<http://www.sbsh.net>

## Table of Content

1.	Introduction – What is ContactBreeze? .....	3
2.	Installation .....	5
3.	The ContactBreeze Application Views .....	7
3.1.	Main View.....	7
3.2.	Detailed View .....	8
3.2.1.	Dial Contact.....	9
3.2.2.	Send Text Message .....	9
3.2.3.	Send Email .....	9
4.	ContactBreeze PIM Extension.....	10
5.	ContactBreeze Options .....	12
5.1.	General .....	13
5.2.	Layout.....	15
5.3.	Tweaks .....	16
6.	Support Links.....	18

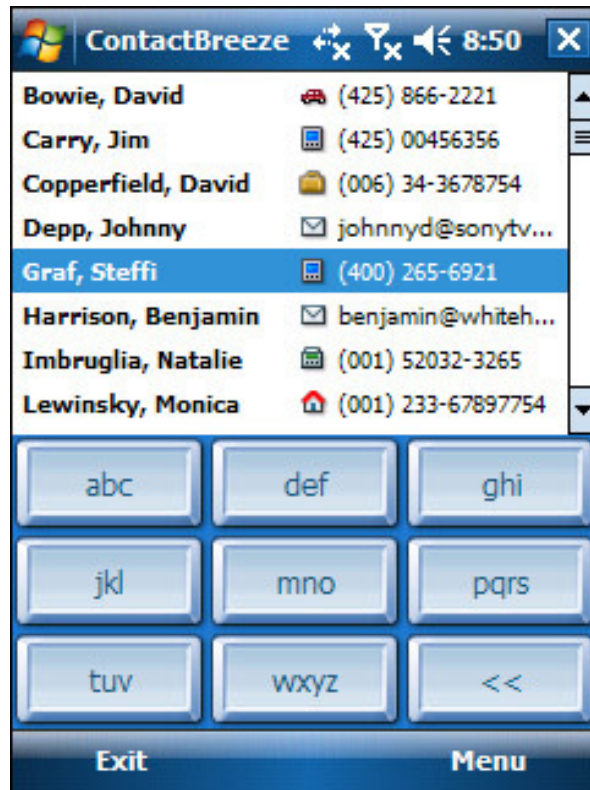
## 1. Introduction – What is ContactBreeze?

ContactBreeze is an application that helps you communicate with your contacts quickly. So that you can have access to all your contacts and their various contact information. ContactBreeze is optimized for easy use, especially one handed navigation with large thumb keys so you can quickly contact people when your device is in the car cradle or when you're on the go and carrying a suitcase so you only have one hand available.

ContactBreeze completely supports **QVGA** and **VGA** devices; all screen orientations and the following operating systems:

- Windows Mobile 2003 (WM 2003)
- Windows Mobile 2003 Second Edition (WM 2003 SE)
- Windows Mobile 5 (WM 5)
- Windows Mobile 6 (WM 6)

ContactBreeze can be configured to fit your needs. You can use the large thumbs keyboard for the optimal one handed navigation, no keyboard at all to view the most contact information or the compact keyboard to combine the search feature with the most optimal screen space dedicated to the contact information. Both keyboards can be skinned for optimal customization!



**ContactBreeze main view**

**Important:** If you also have SBSH PocketBreeze installed on your device, ContactBreeze integrates with that nicely. If you tap on the Contacts tab of PocketBreeze, and then tap on the Contacts tab again, ContactBreeze will be automatically opened. This will also happen if you tap-

and-hold on the Contacts tab and select "Breeze Search". Make sure that you have upgraded PocketBreeze to *at least* version 5.2.04 for this to work.

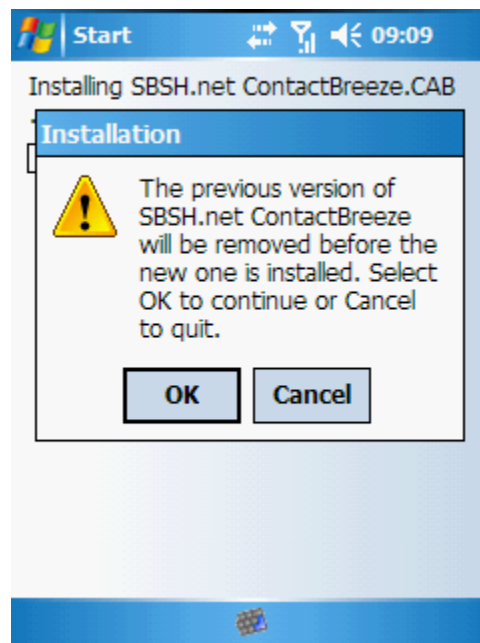
## 2. Installation

Generally, it is most recommended to soft reset your device before the installation.

Installation of ContactBreeze can be done by exe file or by cab file. When downloaded, ContactBreeze will be in a zip file. Unzip this file to find the exe file or the cab files. To install by exe just tap on the file on your desktop. Make sure that you have your device connected to your computer and synced. Then just follow the directions of the installer.

The other way to install is by taking the cab file located in the download folder. Move the correct file (depending on your Operating System, WM5 and WM6 use the same .cab installer) over to your device by using file explorer on your PC. Then navigate to the location of the cab file on your device and tap on it to start the install.

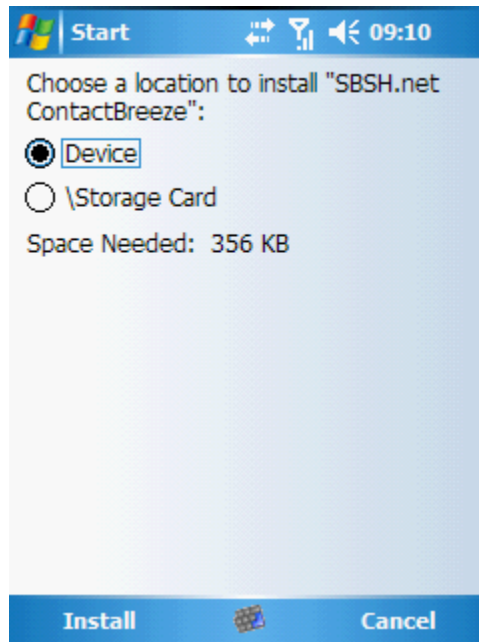
Installing on a WM5 or WM6 device will bring up a popup during the installation (*only* if ContactBreeze has been installed before). This lets you know that the previous version of ContactBreeze will be uninstalled. Tap on ok as this is normal.



**ContactBreeze upgrade popup**

Note that if you have not done the soft reset before the installation as was mentioned above and you have issues with installing ContactBreeze over a previous version, it is wise to soft reset your device, and try to upgrade again.

After selecting where ContactBreeze should be installed (installing on external storage is supported), you can follow the progress on your screen. At the final stage of installation a screen will appear that says that ContactBreeze is installed. You can choose your language, and decide to keep or remove the resource files of the other languages (that you don't use). Finally, tap OK to end installation.



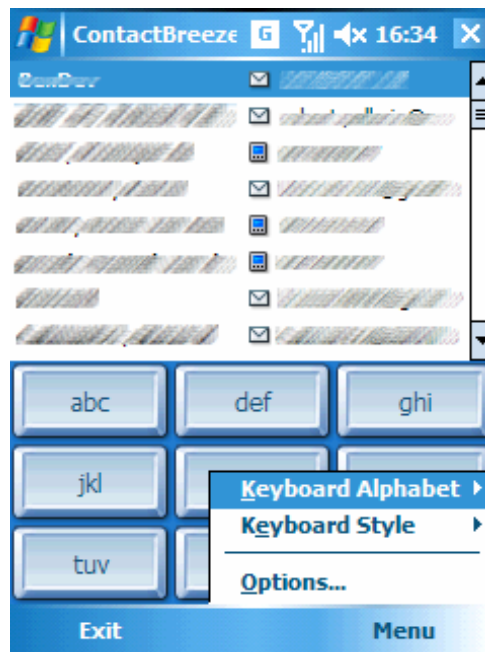
**Installation destination choice**

### 3. The ContactBreeze Application Views

ContactBreeze has two views the main view and the detailed view. Both views have small icons to visually indicate what kind of communication option it represents, such as "mobile phone", "home phone" or "Email".

#### 3.1. Main View

In the main view you can see all your contacts and quickly search your contacts by using the search buttons in the bottom of the screen. Then you can press the Action button on your D-Pad or tap the contact with your stylus to be transferred to the detailed view.



**ContactBreeze main view**

When ContactBreeze is opened, you will see the main view. You can see your contacts at the top, and an optional search bar at the bottom. Various parts of this screen can be configured to your preference, such as the font type, the way the contacts are displayed, if there should be a search section, how it should look like, and what alphabet it should use. These settings are all explained in the various sections of this user manual.

As said, tapping a contact, or choosing it with your D-Pad Action button, transfers you to the Detailed View.

Searching your contacts in this view is really easy. ContactBreeze uses "sequence search", which means that if you use the Latin alphabet as seen above, two presses of the "abc" button will only display contacts with the sequences "aa", "ab", "ac", "ba", "bb", "bc", "ca", "cb" and "cc" in it. After tapping three or four buttons you will likely have the number of displayed contacts greatly reduced and the wanted contact should be visible on your screen. Tapping the "Back" arrows (invisible in the screenshot above, they are behind the softkey popup menu) goes back one step.

So if you have pressed the "abc" button twice, and then press the Back button once, the contacts will be filtered as when you would have only pressed the "abc" button once. Tapping the Back arrow again goes back another step and you will see all your contacts again in this situation.

This view has two softkey buttons available: "Exit" and "Menu".

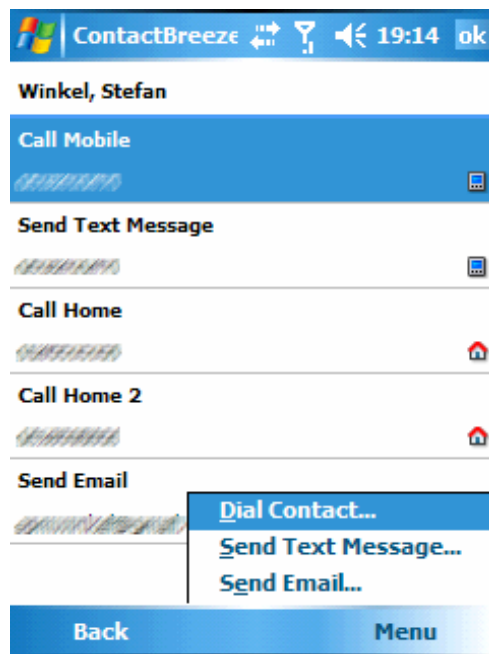
The "Exit" softkey closes ContactBreeze and returns you to what is running in the background (the Today screen or another application that was already active when you opened ContactBreeze).

The Menu softkey has the following options:

- Keyboard Alphabet
- Keyboard Style
- Options

### 3.2. Detailed View

In the detailed view you can see the contact information for that contact and quickly start an e-mail, phone call or SMS message to that contact. To navigate back from the detailed view press the "Back" softkey or the left key on your D-Pad.



**ContactBreeze detailed view**

Once you found your contact, and tapped it, or selected it by using the D-Pad Action button, you are transferred to the detailed view. Here you can see various ways to get in touch your contact. You can tap one of the options with your stylus or press the D-Pad Action button once you highlighted an item and ContactBreeze will immediately start the phone conversation, new Text Message with the phone number already entered or transfer you to the screen where you can choose which Email account to use (according to the type of the selected action). Pressing the

green Dial button dials the selected number.

The two softkeys in this screen are "Back", which functions the same as pressing the Left key on your D-Pad: it takes you back to the Main view. The right softkey is "Menu" and has options that pretty much speak for themselves:

**3.2.1. Dial Contact**

Allows you to dial the selected phone number. Of course this option will not succeed when an Email address is selected.

**3.2.2. Send Text Message**

Allows you to open a new Text Message with the recipients name already filled in.

**3.2.3. Send Email**

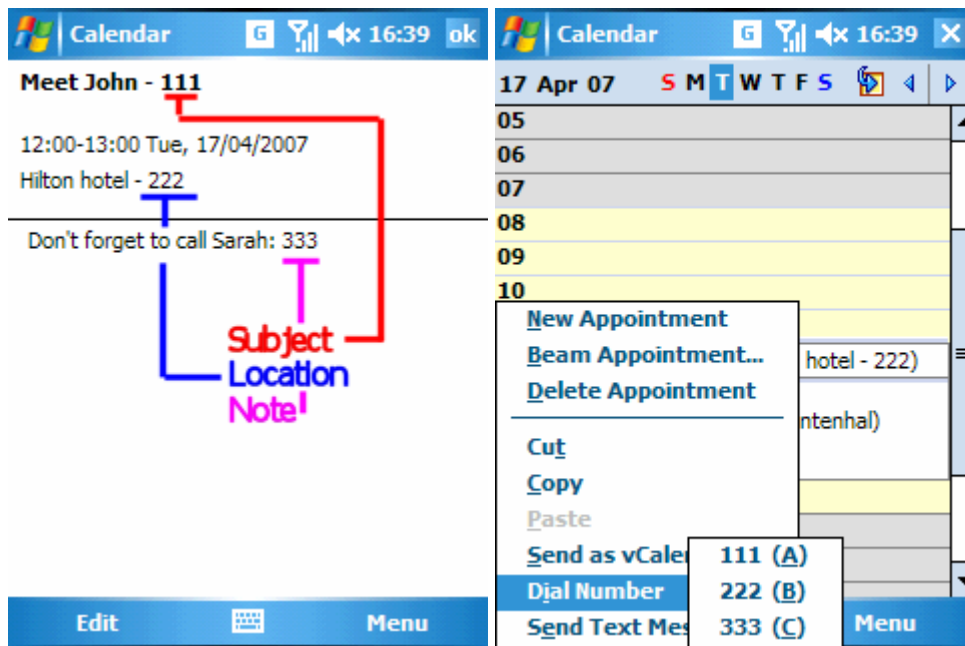
Allows you to start a new Email to your contact. Just pick the service (account) you would like to use, and you can start creating your Email message right away since the recipients name is already filled in.

## 4. ContactBreeze PIM Extension

ContactBreeze can integrate in your PIM (Personal Information Manager) and PocketBreeze nicely. It recognizes numbers in your appointments/tasks and adds a submenu to the context menu that allows you to quickly dial that contact, or send a Text Message.

This manual illustrates this feature with an example appointment but it works exactly the same with Tasks.

Note: for this to also work with SBSH PocketBreeze, you will need to have PocketBreeze version 5.2.04 or higher installed on your device.



**ContactBreeze PIM extension is shown with an example appointment.**

To the left you see an example appointment. Let's say you want to meet with John, who's phone number is 111. You have agreed to meet him at the Hilton hotel, and the phone number of the Hilton hotel is 222. If you should not forget to call Sarah during that appointment, just make a note, including her phone number. Now, when you are in your Calendar, you just have to tap and hold on that appointment to see two new sub menus in the context menu: "Dial Number" and "Send Text Message".

This makes it really easy send John a text message when you're late, and call the Hilton hotel to inform them about the delay. When you finally do have the meeting, you can easily dial Sarah directly from the Appointment in your Calendar.

As said, this works exactly the same for tasks. The difference is that tasks do not have a location field, so, ContactBreeze will only recognize the subject and the note fields. When for appointments it can also check the location field for phone numbers. Options for which fields to check can be set at the "Tweaks" section in ContactBreeze options.

This feature also works with PocketBreeze, starting from version 5.2.04. If you have an appointment or task with a phone number in one of the supported fields, you will see a "Tools"

menu when you tap-and-hold on an appointment or task, which will have the "Send Text Message" and/or the "Dial Number" options.

## 5. ContactBreeze Options

When you choose "Options" in the right softkey "Menu" in the main view of ContactBreeze, you will see the ContactBreeze Options screen.



**ContactBreeze Options screen**

### ***General***

This will take you to the General section of ContactBreeze Options, which is discussed in chapter 6.

### ***Layout***

This will take you to the Layout section of ContactBreeze Options, which is discussed in chapter 7.

### ***Tweaks***

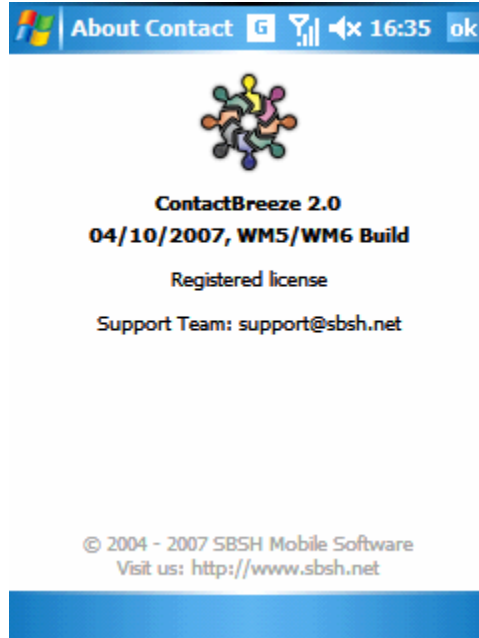
This will take you to the Tweaks section of ContactBreeze Options, which is discussed in chapter 8.

Pressing the left **"Save" softkey** saves the settings and returns to the ContactBreeze main view. Pressing the **"Menu" softkey** opens a menu with the following options:

### ***Registration***

Here you can register ContactBreeze with the registration info you received after your purchase. It will unlock the time-limited trial of ContactBreeze.

### ***About***



### **ContactBreeze About screen**

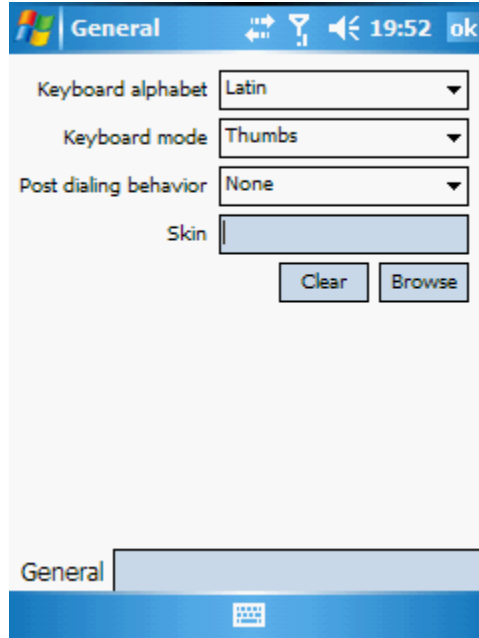
Here you can see the version number of ContactBreeze, and you can also see if ContactBreeze is registered. If not, you will see a "Register" button.

#### ***Cancel***

Leave the ContactBreeze Options without saving the changes.

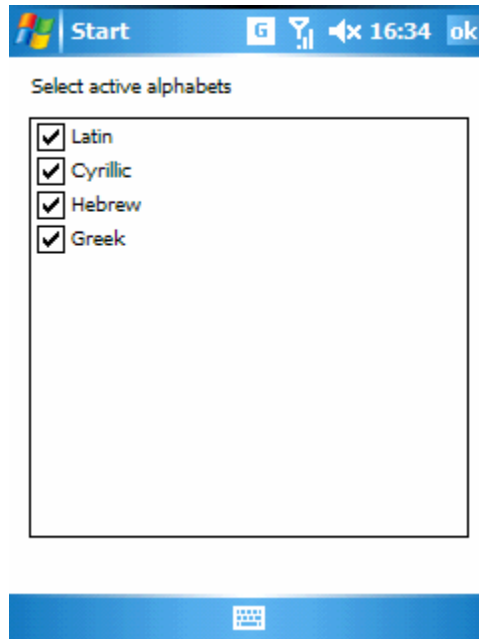
#### **5.1. General**

The General section of ContactBreeze Options contains the following settings.



**ContactBreeze General Options section**

### ***Keyboard alphabet***



**Active alphabets dialog**

Here you can set the alphabet that should be displayed in the Main View. By default, four alphabets are available: **"Latin"**, **"Cyrillic"**, **"Hebrew"** and **"Greek"**. The alphabet you choose from this drop down menu is the *displayed* alphabet, but *all* alphabets in this list are used in the search.

To disable unneeded alphabets, pick **"Edit alphabets..."** from the drop down

menu. You will see the "Active alphabets" dialog where you can uncheck the alphabets which shouldn't be used in a search.

### ***Keyboard style***

The Keyboard Style option lets you chose the preferred search keyboard style.

**"None"** – If you choose this option, no keyboard will be visible. You can still navigate your contacts with the stylus, scrollbar or with your D-Pad control buttons though! This option is useful to display a lot of contacts at once.

**"Compact"** – This shows a small keyboard on the bottom, where all characters are placed in one row. This will optimize the free screen space to display as many contacts as possible, while still having the possibility to quickly reduce the amount of contacts to scroll through by tapping some of the search buttons at the bottom.

**"Thumbs"** – This Keyboard Style is optimal for easy one handed use. It will have large buttons that can be used with your thumb, which is ideal for in the car or on the street.

### ***Post dialing behavior***

The setting that you set here will determine what ContactBreeze should do after performing an action such as initiating a phone call, or starting a new Text or Email message.

**"None"** – ContactBreeze will remain open as the current active application in the detailed view of your contact.

**"Back to search"** – ContactBreeze will remain open, and return to the Main view where you can search through your contacts.

**"Back to search and minimize"** – ContactBreeze will return to the Main view, but it will minimize so that it runs in the background. This is useful to "hide" ContactBreeze, while keeping it running in the background so that it will open faster the next time you access ContactBreeze.

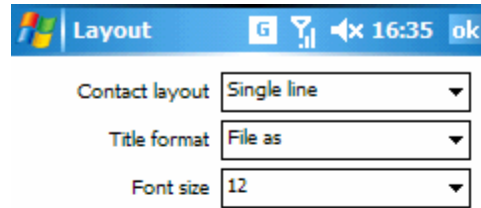
**"Close application"** – This will close ContactBreeze after performing an action as mentioned above.

### ***Skin***

Here you can set the skin folder which contains your custom keyboard skin, if you have downloaded a new keyboard skin from the ContactBreeze Resources forums (see the chapter "Support Links"). Pressing the Clear button will revert back to the default skin, and pressing the Browse button will allow you to navigate to the folder on your device that contains the new keyboard skin.

## **5.2. Layout**

The Layout section of ContactBreeze Options contains the following settings.



### ContactBreeze Layout Options section

#### **Contact layout**

Here you can determine how ContactBreeze should display your contacts.

**"Single line"** – Displays your contacts and their primary contact information in one horizontal line.

**"Names only"** – Displays the names of your contacts only.

**"Expanded"** – Displays the names of your contacts on the first horizontal line, and add a second horizontal line below that with their primary contact information.

#### **Title format**

Here you can specify how your contacts should be titled.

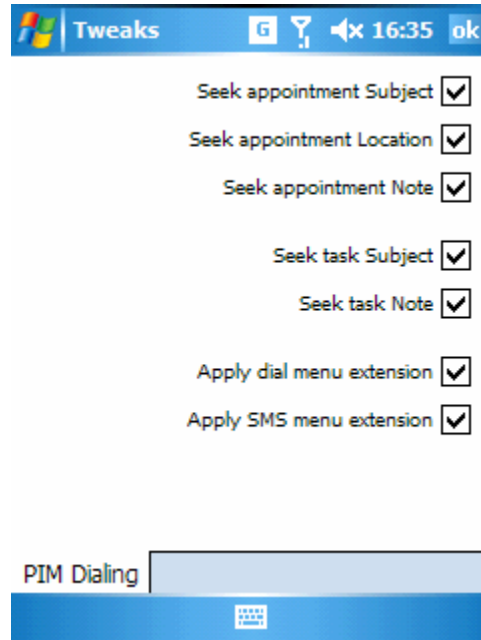
**"File as"** – Displays your contacts the way they are filed in Pocket Outlook.

#### **Font size**

Here you can determine the size that should be used to paint your contacts and their details. The higher this value is, the larger your contacts will be displayed, but it will limit the amount of contacts that fit on your screen. You can set the size from 8 to 24.

### 5.3. Tweaks

In this section of ContactBreeze Options, you can tweak some of the settings that determine how the PIM Extension feature works.



### ContactBreeze Tweaks Options section

#### ***Seek appointment Subject***

Here you can set if ContactBreeze should scan the appointment Subject field for phone numbers.

#### ***Seek appointment Location***

Determine if ContactBreeze should look for numbers in appointments Locations.

#### ***Seek appointment Note***

Determine if ContactBreeze should look for numbers in appointments Notes.

#### ***Seek task Subject***

Determine if ContactBreeze should look for numbers in the tasks' Subject field.

#### ***Seek task Note***

Determine if ContactBreeze should look for numbers in the tasks' Note field.

#### ***Apply dial menu extension***

Toggle the "Dial" menu in your PIM and PocketBreeze on or off.

#### ***Apply SMS menu extension***

Toggle the "Send Text Message" menu in your PIM and PocketBreeze on or off.

## 6. Support Links

For additional questions or support please use the following links:

SBSH support team email address: [support@sbsb.net](mailto:support@sbsb.net)

For help in recovering your password please use the password recovery tool located at: <http://www.sbsb.net/support/>

All SBSH software can be registered and downloaded at our site: <http://www.sbsb.net>

Additional questions and information can be found at our forums: <http://www.sbsb.net/forums>

Dedicated ContactBreeze forums are at: <http://www.sbsb.net/forums/index.php?showforum=33>

Additional ContactBreeze Thumbs keyboards can be found in the ContactBreeze resources forum located at: <http://forums.sbsb.net/index.php?showforum=81>

**This is the end of the ContactBreeze user manual.**

**We hope that you will enjoy using ContactBreeze and other SBSH products.**